

## Power supply unit - EG 45-PS-230AC/24DC/250 - 2940618

Please be informed that the data shown in this PDF Document is generated from our Online Catalog. Please find the complete data in the user's documentation. Our General Terms of Use for Downloads are valid (<http://phoenixcontact.com/download>)



The illustration shows version EG 45-PS-120AC/ 24DC/250

DIN rail power supply unit, secondary-switched, input 230 V AC, output 12-28 V DC/250 mA, pre-setting 24 V DC



### Key Commercial Data

Packing unit	1 pc
Weight per Piece (excluding packing)	530.1 g
Custom tariff number	85044082
Country of origin	Germany

### Technical data

#### Dimensions

Width	45 mm
Height	107 mm
Depth	77 mm

#### Ambient conditions

Degree of protection	IP20
Ambient temperature (operation)	0 °C ... 60 °C

#### Input data

Nominal input voltage	230 V AC
AC frequency range	50 Hz ... 60 Hz
Current consumption	approx. 60 mA
Nominal power consumption	approx. 12 VA
Power failure bypass	35 ms
Input fuse	0.4 A (slow-blow TR 5, internal, solderable)

# Power supply unit - EG 45-PS-230AC/24DC/250 - 2940618

## Technical data

### Output data

Nominal output voltage	12 V DC $\pm 2\%$ (can be set up to 28 V DC. Default 24 V DC $\pm 4\%$ )
Nominal output current ( $I_N$ )	250 mA
Residual ripple	$< 100$ mV <sub>PP</sub>
Type of protection	Electronic disconnect at $1.3 \times I_N$
Protective circuit/component	Varistor

### General

Net weight	539 g
Operating mode	100% operating factor
Test voltage input/output	4 kV AC
Mounting position	On horizontal DIN rail
Assembly instructions	Can be aligned with spacing = 10 mm

### Connection data, input

Connection method	COMBICON plug-in screw terminal block
Conductor cross section solid min.	0.2 mm <sup>2</sup>
Conductor cross section solid max.	2.5 mm <sup>2</sup>
Conductor cross section flexible min.	0.2 mm <sup>2</sup>
Conductor cross section flexible max.	2.5 mm <sup>2</sup>
Conductor cross section AWG min.	24
Conductor cross section AWG max.	14
Stripping length	8 mm
Screw thread	M3

### Connection data, output

Connection method	COMBICON plug-in screw terminal block
Conductor cross section solid min.	0.2 mm <sup>2</sup>
Conductor cross section solid max.	2.5 mm <sup>2</sup>
Conductor cross section flexible min.	0.2 mm <sup>2</sup>
Conductor cross section flexible max.	2.5 mm <sup>2</sup>
Conductor cross section AWG min.	24
Conductor cross section AWG max.	14
Stripping length	8 mm
Screw thread	M3

### Standards and Regulations

Standards/regulations	prEN 50178
	DIN EN 50178/VDE 0160
	DIN VDE 0106-101

# Power supply unit - EG 45-PS-230AC/24DC/250 - 2940618

## Technical data

### Standards and Regulations

	DIN VDE 0551
--	--------------

## Classifications

### eCl@ss

eCl@ss 4.0	27040702
eCl@ss 4.1	27040702
eCl@ss 5.0	27049002
eCl@ss 5.1	27049002
eCl@ss 6.0	27049002
eCl@ss 7.0	27049002
eCl@ss 8.0	27049002
eCl@ss 9.0	27040701

### ETIM

ETIM 2.0	EC001039
ETIM 3.0	EC001039
ETIM 4.0	EC000599
ETIM 5.0	EC002540

### UNSPSC

UNSPSC 6.01	30211502
UNSPSC 7.0901	39121004
UNSPSC 11	39121004
UNSPSC 12.01	39121004
UNSPSC 13.2	39121004

## Accessories

### Accessories

#### Fuse

Fuse - VF-SI/TR5/0,4AT - 2900997

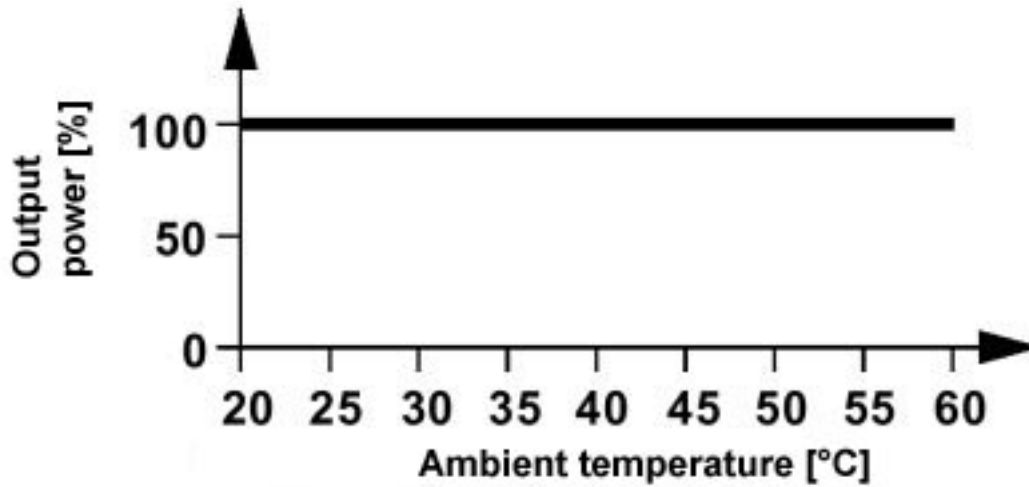


Plug-in fuse (TR5<sup>®</sup>), nominal current: 0.4 A, tripping characteristic: slow-blow (T), packing volume per unit: 8 pcs.

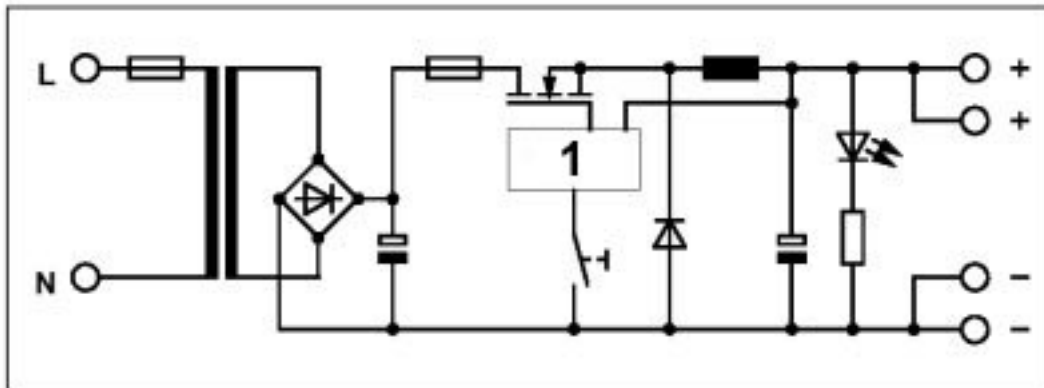
# Power supply unit - EG 45-PS-230AC/24DC/250 - 2940618

## Drawings

Diagram



Circuit diagram



1 = switched-mode regulator

# Mouser Electronics

Authorized Distributor

Click to View Pricing, Inventory, Delivery & Lifecycle Information:

[Phoenix Contact:](#)

[2940618](#)